

mandraw for artists

...mature male models taking a pose for the figurative arts.



Vol.1 No.1

Summer Issue

July 2014

DRAWING THE MALE FIGURE

The handling of texture in the male figure varies from the female figure in a variety of ways. Most of these are generalizations based on the average male or female model and on general observations from art history. Males tend to be wider and larger, their musculature is often more apparent, and the appearance of facial hair is common.

When drawing the male, lines are often drawn with more of an angularity and harshness. In design the terms masculine and feminine are used to describe the character of a form. A feminine form often has soft flowing and rounded lines, where a masculine form is usually angular, rough and hard-edged. Cars, for example, either have rounded flowing lines like a Jaguar (feminine) or hard sharp edges like a Jeep (masculine). In much of Western art history, the male is portrayed in a much harsher way than the female figure.

When drawing, one may want to handle the charcoal or pencil in a more physical way. Pressing down harder, erasing with more gusto, and making more errant marks can communicate a more masculine form. Remember that this is a visual generalization and it may be just as appropriate to handle the male figure in a softer way depending on the context from which you are working.

CONSTRUCTION COMPLETE!

I can't believe it took over four years to get it done. I am Dennis Zelazny, a commercial graphic artist for over 30 years specializing in graphic design. I decided that I needed to get back to the basics of art...by drawing. The problem was that I was busy with a career and never had a space to draw. I signed up for programs and had to cancel half of the appointments. And if I was going to draw at home I had to take the time to clear a space. But thanks to determination and some help from others, my space; "The Studio" came to life.

Anyone who has participated in a construction project can attest to the fact that if it can go wrong, it will and just when you thought it was going to be just right...surprise it's far from it. I will spare everyone all the details of my ups and downs including the big wet basement problem and proudly tell you that the project is done and only fine tuning is happening as me and my models set out to work.

I had the good fortune to have a few models willing to try it out the new space. The results were good. The design of the area is very modern and sleek industrial. One



described it, as "not home-like" which I think is a good thing. We also found that the lighting was too harsh for video but I am getting umbrellas to correct the problem. All the gentlemen agreed it was very professional and that they would like to revisit, to work on their craft and with me.

Needless to say I am excited about "The Studio" and looking forward to developing my drawing skills and working with models that also have goals too.

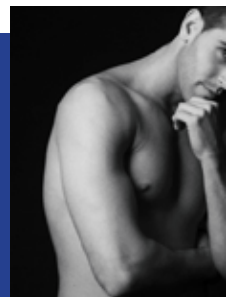


I will develop a newsletter to keep everyone posted on what's happening. Please remember if you want to participate please email me at denniszelazny@yahoo.com with your requests. I would like to use "The Studio" Monday and Tuesday evenings and saving the weekends for special requests.

Please keep in touch.

COMING SOON: LIVE STREAMING PROGRAM FOR ARTISTS

If you are interested in posing for artists everywhere and would like to do so with the help of new technology this might be something you would be interested in. I am looking for life models and people that are technically informed to take part in this opportunity.



DENNIS ZELAZNY • 586-764-8762 • DENZ.MOBI • denniszelazny@yahoo.com